

# Continuum of Need

## Universal

### LEVEL 1

Children whose needs are fully met and thrive:

- aspire and achieve
- safe and secure
- happy and healthy
- resilient and ready for adulthood

## Universal Plus

### LEVEL 2

Children with additional needs

Family who can meet their children's needs with some additional support, usually in the short term

Early help plan

## Universal Partnership Plus

### LEVEL 3

Children with multiple and complex needs

Family with multiple complex needs who can meet their children's needs with targeted and co-ordinated support

Step up, step down  
MASH / \*HRDA

## Safeguarding

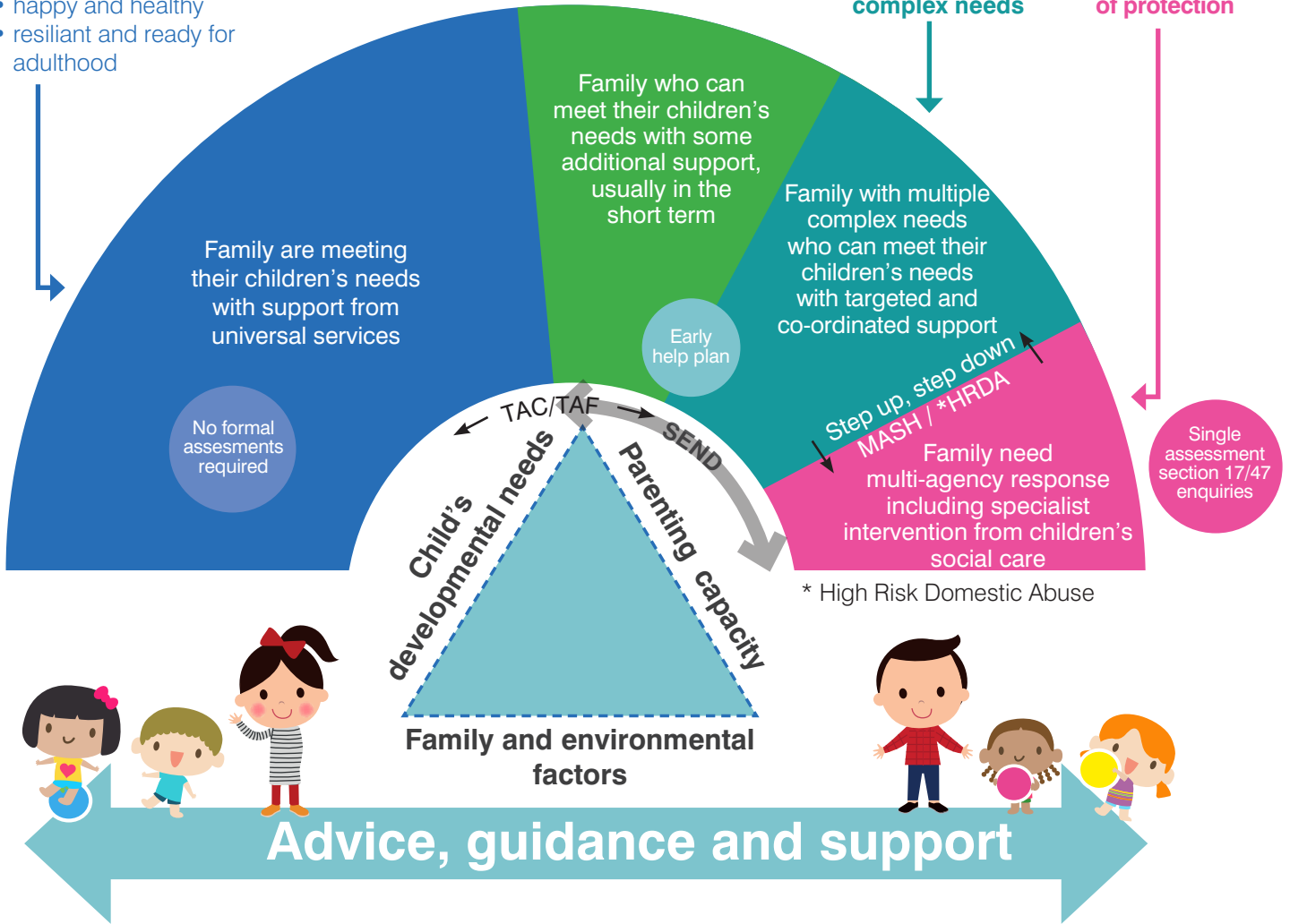
### LEVEL 4

Children with acute needs including those in need of protection

Family need multi-agency response including specialist intervention from children's social care

Single assessment section 17/47 enquiries

\* High Risk Domestic Abuse



The continuum of need is intended to provide practitioners with a shared understanding and common language around needs and risks surrounding children and their families

The continuum should be used with the level indicators which provide descriptors of need for each level and LSCB guidance at [www.southamptonlscb.co.uk](http://www.southamptonlscb.co.uk)

It is a strength based approach that requires practitioners to assess and support families to help themselves. The continuum doesn't replace professional judgement or assessment and planning tools

**Our vision is that children and young people have a good start in life**

# Continuum of Need

## Level Indicators

Level	<b>LEVEL 1</b> - Children whose needs are fully met and thrive	<b>LEVEL 2</b> - Children with additional needs	<b>LEVEL 3</b> - Children with multiple complex needs	<b>LEVEL 4</b> - Children with acute needs including those in need of protection
	<p>Family are meeting children's needs with support from universal services.</p> <p>Children:</p> <ul style="list-style-type: none"> <li>• Aspire and achieve</li> <li>• Are safe and secure</li> <li>• Are happy and healthy</li> <li>• Are resilient and ready for adulthood</li> </ul> <p>Family need limited additional intervention from universal settings to prevent needs arising</p>	<p>Family are meeting their children's needs but need some additional support</p> <p>Support can be met within identified resources through a single agency response and/or partnership working with the family.</p> <p>Family may need advice and guidance to help them understand and meet additional needs of their children.</p>	<p>Family with multiple complex problems or needs who can meet their children's needs with targeted support</p> <p>Families require a coordinated, whole family approach, led by a Lead worker or key worker enabling the family to meet the children's needs</p>	<p><b>Section 47 Children Act 1989</b></p> <p><b>Child provided with accommodation by the local authority under s.20 Children Act 1989</b></p> <p><b>Care Orders under s.31 Children Act 1989; initiation of care proceedings</b></p> <p>There is an accumulation of unmet and complex needs with evidence that a child is at risk of harm.</p> <p>A safety plan that protects the children and ensures the family can meet their needs is required.</p>
			<p><b>SEND (s.17)</b> Family need multi-agency response which may include specialist intervention from Children's Social Care</p>	<p><b>SEND (s.17)</b> Family need multi-agency response including specialist intervention from Children's Social Care</p>

<b>Referral and intervention type</b>	No referral required Families or services can ask for support	Parent or Young Person consent required to request a service (eg; parenting, family support, training)  Outcomes can be specified from a checklist; on occasion this may be reviewed at a TAC/TAF	Request can be made using a referral form or an assessment, multi-agency joint work or by prior consent with a family.  An Early Help Plan can be used to monitor and review a families progress	A section 47 enquiry triggers a single assessment, that may result in Child Protection Plan or protective measures are required to safeguard a child immediately.  A child's needs are assessed (s.17) and monitored and reviewed as part of a CIN Plan.
	<b>SEND</b> Local 0-25 Offer	<b>SEND</b> Local 0-25 Offer	<b>SEND (s.17)</b> <b>Local 0-25 Offer and</b> Request may be made for joint work with specialist health services or SEND with reference to EHCP.	<b>SEND (s.17)</b> <b>Local 0-25 Offer and</b> Request made for joint work with specialist health services or SEND Service with reference to EHCP and/ or Jigsaw.

### Relevant protocols and procedures to consider

A range of useful policies and procedures, as well as advice and guidance for agencies can be found at: [www.southamptonlscb.co.uk](http://www.southamptonlscb.co.uk)

These include:

#### The Neglect Toolkit

4 LSCB Joint Working Protocol

PIPPA Domestic Violence Guidance

Child Sexual Exploitation Procedures

4 LSCB Maternity and Children's Service Unborn Babies Safeguarding Protocol

4 LSCB Protocol Bruising In Infants Who Are Not Independently Mobile

Honour Based Violence Multi-agency Guidance

4 LSCB Missing, Exploited and Trafficked Protocol

<b>Examples of key worries or complicating factors</b>	<b>LEVEL 1 - Developmental needs</b>	<b>LEVEL 2 - Developmental needs</b>	<b>LEVEL 3 - Developmental needs</b>	<b>LEVEL 4 - Developmental needs</b>
	Achieving learning targets Good attendance Meeting developmental milestones Ability to protect self and be protected Physically well Balanced healthy diet/good hygiene/clothing Speech & language development appropriate Dental and optical care as required Good state of mental health & emotional wellbeing No use or exposure to substances	Some evidence child not achieving learning targets Attendance has fallen below 90% Some use of internal exclusion/seclusion or alternative provision in school Risk of social exclusion Some poor attachments observed Language and communication difficulties Reduced access to core services due to -disability or additional special need Potential for disengaging in education training and learning.	Persistent absence from school Emerging pattern of being missing from home Regular use of fixed term/permanent exclusion Socially excluded Some observed poor attachment between parent and child No access to core services Has disengaged from education employment or training. Developmental milestones not being met due to persistent parental failure/inability Chronic/recurring health problems	Persistent social exclusion Observed and enduring poor attachment between parent and child Complex/multiple disabilities Non-organic failure to thrive Sexually inappropriate behaviour of young person that places them at risk of harm or abuse Sexually aggressive behaviour Teenage parent/pregnancy under the age of 13, struggling to cope and placing child/parent at risk Sexual exploitation/abuse/trafficking Drug/alcohol use severely impairing development Frequently missing from home resulting in self-neglect

	LEVEL 1 - Developmental needs	LEVEL 2 - Developmental needs	LEVEL 3 - Developmental needs	LEVEL 4 - Developmental needs
<b>Examples of key worries or complicating factors</b>		<p>Potential not to attain</p> <p>Slow in meeting developmental milestones</p> <p>Missing health checks/ immunisations</p> <p>Minor health problems</p> <p>Early signs of offending / anti-social behaviour</p> <p>Underage sexual activity</p> <p>Early signs of drug/alcohol misuse</p> <p>Poor self-esteem</p> <p>Low level emotional/mental health issues</p>	<p>Regular missed appointments affecting developmental progress</p> <p>Risk of teenage pregnancy, or pregnancy</p> <p>Drug/alcohol misuse impacting negatively</p> <p>Risky sexual behaviour (e.g. unprotected sex)</p> <p>Offending/anti-social behaviour resulting in risk of entering Youth Justice System</p> <p>Emotional/mental health issues</p> <p>Complex mental health issues affecting developmental needs, including self-harm</p> <p>High level emotional health issues and very low self-esteem</p>	<p>Offending and in the criminal justice system</p> <p>Unaccompanied minors</p>
	LEVEL 1 - Family and environment	LEVEL 2 - Family and environment	LEVEL 3 - Family and environment	LEVEL 4 - Family and environment
<b>Examples of key worries or complicating factors</b>	<p>Supportive relationships</p> <p>Housed, good diet and kept healthy</p> <p>Supportive networks</p> <p>Access to positive activities</p> <p>Access to sufficient income</p>	<p>Sometimes poor parent/child relationships</p> <p>Children of prisoners / parents subject to community orders</p> <p>Experienced bullying/racist incident</p> <p>Experienced some community harassment / discrimination</p> <p>Low income affects achievement/ Pupil Premium</p> <p>Parenting advice needed to prevent needs escalating</p> <p>Poor access to core services</p> <p>Risk of relationship breakdown</p> <p>Concerns about possible domestic abuse</p>	<p>Housing tenancy at risk/ intentionally homeless.</p> <p>Young carers</p> <p>Have inadequate housing or poor home environment impacting on child's health</p> <p>Community harassment / discrimination</p> <p>Experiencing domestic abuse, but family able to work in partnership to reduce and/or mitigate the risks</p> <p>Relationship breakdown adversely impacts on children's wellbeing, development or opportunities</p> <p>Transient families</p> <p>Risk of exposure to extreme or violent political or religious groups</p> <p>Family chronically socially excluded</p> <p>Persistent racial harassment or abuse from neighbours</p>	<p>Person defined as a 'Risk to Children' in vicinity and known to household</p> <p>Child/ young person has been identified as In Need, but parent/carers have refused support</p> <p>High risk of family breakdown and risk of child/young person being removed from home</p> <p>Family home used for drug taking, prostitution, illegal activities</p> <p>Person defined as 'Risk to Children' living in home</p> <p>Imminent family breakdown and risk of child becoming looked after</p> <p>Hygiene of home environment places child/ young person at risk</p> <p>Physical accommodation places child in danger</p> <p>Family re-housed as part of Witness Protection programme.</p> <p>Chronic persistent absence, permanent exclusions or no school place that risks entry to the care system</p>

	LEVEL 1 - Family and environment	LEVEL 2 - Family and environment	LEVEL 3 - Family and environment	LEVEL 4 - Family and environment
<b>Examples of key worries or complicating factors</b>			<p>(Rational) fear of persecution by others</p> <p>Socially abusive family involved in ant-social behaviour</p> <p>Serious debts/poverty impact on ability to have basic needs met, or on ability to care for child/young person</p> <p>Parents experience stress due to unemployment or 'overworking'</p> <p>Chronic unemployment that has severely affected parents' own identities</p> <p>Family unable to gain employment due to long-term difficulties e.g. substance misuse, disability, and/or with significant lack of basic skills.</p> <p>Family with a disabled child who may benefit from short breaks, access to community resources or social opportunities (eg; sports, peer support, clubs and activities)</p>	<p>Suspicion of physical, emotional or sexual abuse or neglect</p> <p>Domestic abuse resulting in child being at risk of significant harm</p> <p>Homeless child/young person</p> <p>Family intentionally homeless</p> <p>Community harassment/discrimination</p> <p>Extreme poverty affecting child well-being</p> <p>Forced marriage, Honour Based Violence, Female Genital Mutilation</p> <p>Exposure to extreme or violent political or religious groups</p> <p>Family with a disabled child who would benefit from short breaks, access to community resources or social opportunities (eg; sports, peer support, clubs and activities)</p>
<b>Examples of key worries or complicating factors</b>	LEVEL 1 - Parents and carers	LEVEL 2 - Parents and carers	LEVEL 3 - Parents and carers	LEVEL 4 - Parents and carers
	<p>Protected by carers</p> <p>Secure and caring home</p> <p>Receive and act on information, advice and guidance</p> <p>Appropriate boundaries maintained</p> <p>Parents have an awareness of and access to Local 0-25 SEND Offer</p>	<p>Inconsistent care arrangements</p> <p>Poor supervision by parent/carer</p> <p>Inconsistent parenting</p> <p>Poor response to emerging needs</p> <p>Historic context of parents/carers own childhood</p> <p>Parents need advice and help to meet needs of child with disability</p>	<p>Parental learning or physical disability, substance misuse or mental health impacts on parenting</p> <p>Inconsistent care arrangements</p> <p>Poor supervision by parent/carer</p> <p>Inconsistent parenting</p> <p>Poor response to identified needs</p> <p>Historic context of parents/carers own childhood</p> <p>Parents are struggling to meet the needs of a child with disability and might benefit from short breaks or specialist service input</p>	<p>Parent resisting engagement with professionals</p> <p>Unable to meet additional needs, despite support</p> <p>Mental health or severe substance misuse involvement affecting ability to function on daily basis and affecting majority of parenting responsibilities including child's health and development</p> <p>Parents unable to care for previous children</p> <p>Failure to seek appropriate health care affecting child/young person</p> <p>Child is taken into care</p> <p>Child is on Child Protection Plan</p> <p>Care proceedings are being undertaken with legal solution not yet secured</p> <p>Failure, in spite of help, to recognise health care needs for self or child person's development</p>

				<p>Parent unable to provide 'good enough' care</p> <p>Parents inconsistent, highly critical or apathetic towards child/young person</p> <p>Deep distress to child/young person due to severe emotional abuse (rejection, verbal abuse)</p> <p>Very young child left at home alone or with young carers</p> <p>Inability to judge dangerous or risky situations</p> <p>Instability and severe physical violence in the home continually – victim very frightened; child directly involved in incidents; witnessed by child</p> <p>Child/young person rejected from home</p> <p>Persistent, serious DV, child at risk of significant harm.</p> <p>Child/young person subject of parental delusions which imply risk</p> <p>Evidence of, or suspected, fabricated or induced illness</p> <p>Child/young person beyond parental control</p> <p>Concerns about parenting of a child/young person who is at risk of becoming looked after</p> <p>Unable to protect child/young person from harm</p> <p>DV: stalking mother/children</p> <p>DV where abuser violates protective legal orders to commit acts of violence or abuse.</p> <p>Child has no parent/carer or has been abandoned Ensuring Safety, Protection, Stability</p> <p>Child is assessed to be on the 'Edge of care'</p> <p>Parental encouragement of abusive/offending behaviour</p> <p>Continuing poor supervision in the home</p>
--	--	--	--	---

	<b>LEVEL 1 - Parents and carers</b>	<b>LEVEL 2 - Parents and carers</b>	<b>LEVEL 3 - Parents and carers</b>	<b>LEVEL 4 - Parents and carers</b>
				Parental non-compliance/ disguised non-compliance or co- operation  Inconsistent parenting affects child's developmental progress  Private fostering  Parents are consistently unable to meet the needs of their disabled child
<b>Level of assessment</b>	<b>No formal assessment required</b>	<b>Early Help Plan (Level 2 to 3) or EHCP (3)</b>		<b>Single Assessment (s.17/47) s.31 Care Planning s.17/EHCP</b>
<b>Key activities</b>	<p>The Southampton Family Information Service gives advice and support to parents, and help for childcare providers. This includes advice on:</p> <ul style="list-style-type: none"> <li>• nurseries and pre schools</li> <li>• local childminders</li> <li>• parenting and family support</li> <li>• parent and toddler groups</li> <li>• children's health</li> <li>• breakfast clubs</li> <li>• after school activities</li> <li>• out of school/holiday activities</li> <li>• working with children</li> </ul> <p>For more information please email <a href="mailto:fis@southampton.gov.uk">fis@southampton.gov.uk</a></p> <p>Alternatively you can use the Southampton Information Directory to link directly to universal services at <a href="http://sid.southampton.gov.uk">sid.southampton.gov.uk</a></p> <p>Family Health Needs Assessment, Outcome Star or EHA may be completed, but not required</p> <p><b>SEND</b></p> <p>Parents access Local 0-25 Offer</p>	<p>Consider using an Early Help Plan to coordinate support.</p> <p>An Early Help Assessment or 'other' assessment may assist work with the family to understand and respond to their needs</p> <p>Refer family to key services that can provide additional support.</p> <p>Family self refers to key services once signposted or given information, advice or guidance</p> <p><b>SEND</b></p> <p>Parents access Local 0-25 Offer, but may benefit from some Early Help assistance</p>	<p>Use Early Help Plan to coordinate support to family as part of a Team Around the Family</p> <p><b>SEND</b></p> <p>Child assessed for support as s.17 with ECHP and/or receive services as part of local offer (SEND)</p> <p>If under school age without EHCP as above.</p>	<p><b>Urgent referrals relating to Child Protection</b></p> <p>If you believe that urgent action is needed because, for example, a child is in immediate danger or needs accommodation phone the Children's Advice and Duty Service on <b>023 8083 3336</b> (Out of hours: <b>023 8023 3344</b>)</p> <p><b>SEND</b></p> <p>Child will be assessed for support with an ECHP and/or receive services as part of local offer (SEND) as s.17 or s.47</p>