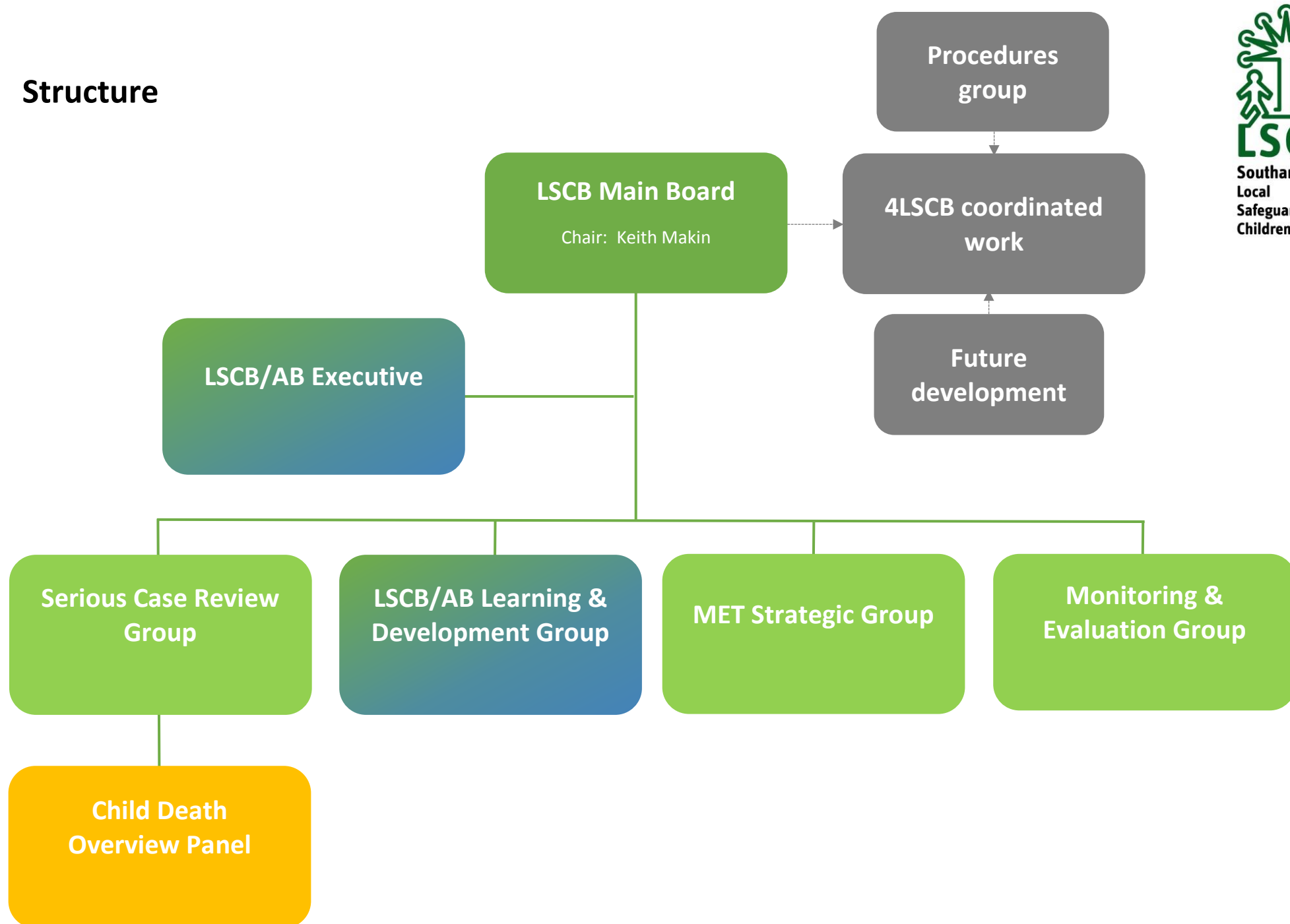


Structure



Functions

The **Main Board** is attended by panel of senior officers from all safeguarding partners in the city. Together they form the core decision making body for the partnership and have a constitution which details their responsibilities.

The **Executive** incorporates Children's & Adults Boards. It is attended by senior representatives from the three key safeguarding partners (Police, Health & Council) plus the Independent Chairs of both Boards. The Executive plans for Main Board meetings, receives reports on progress from each of the Sub Group Chairs to monitor progress and also controls the budgets for each Board.

The **Serious Case Review** Group receives referrals for reviews and determines whether they meet criteria for a Serious Case Review. The Group initiates and monitors delivery for Serious Case Reviews or Partnership Reviews where cases do not meet the criteria. It ensures that resultant learning is shared with partners to help prevent the circumstances occurring again and links with Child Death Overview Panel.

Learning & Development Group sits across the Children & Adults Boards & ensures that multi agency staff can meet the standards for safeguarding outlined in pan-Hampshire Safeguarding Policy & Procedures. The Group ensures that the workforce is trained to effectively safeguard children, young people and adults at risk of or experiencing abuse and neglect, it enables and promotes learning & development, commissions Safeguarding Level 3 training and reviews multi agency training to ensure it is fit for purpose.

The **Missing, Exploited and Trafficked Strategic Group** provides strategic guidance to the operational MET Group, sets the MET Action Plan, focusses on issues including missing children, those at risk or involved in gangs, child criminal exploitation (including child sexual exploitation), at those children at risk of or subject to trafficking or modern slavery. Receives the Problem Profile from Hampshire Constabulary and considers responses to highlighted problems.

The **Monitoring & Evaluation Group** delivers monitoring and evaluation activity to drive improvements in services to safeguard and promote the welfare of children and young people. It receives presentations on Section 11s, has oversight of multi-agency data, delivers thematic audits, and shares good practice.

Child Death Overview Panel reviews child deaths in order to identify any trends or learning.

The **4LSCB** area work includes 4LSCB Policy and Procedures Group and Project Management for the future coordination of 4LSCB work.